

MED 340 ULTIMATE

according to DIN 13277

Equipment

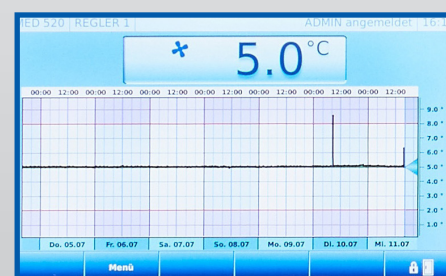
- Forced-air cooling
- 9 drawers
- Automatic defrosting
- Condensate evaporation
- Potential-free contact
- Antifreeze
- Visual and audible alarm signal, even in the event of a power failure
- Minimum/maximum temperature memory

**MADE IN
GERMANY**



ULTIMATE-Features

- Touch display, capacitive, elegant glass design
- Graphic display of the temperature curve with logbook function
- Access control via password entry or RFID possible
- PC-KIT-NET for temperature documentation and monitoring via LAN

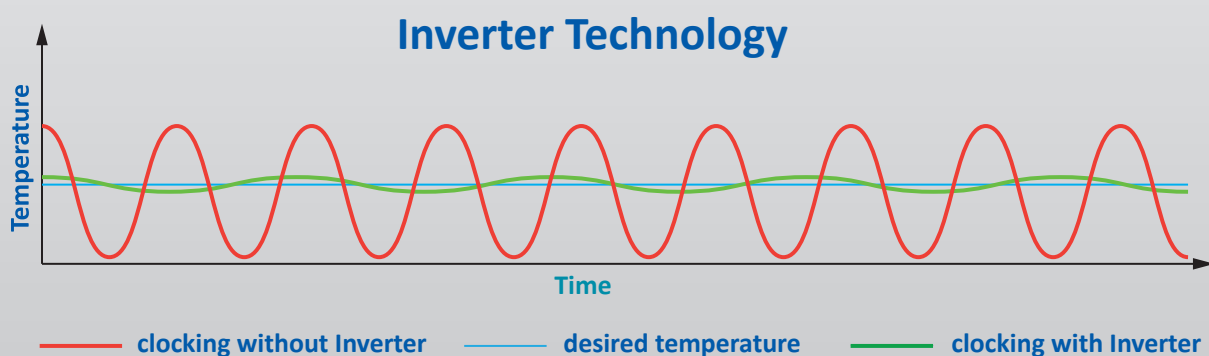


Compressor with inverter technology

- Environmentally friendly natural refrigerant R600a.
Very low GWP value = 3 (Global Warming Potential)
- Reduction in power consumption by 38 % compared to the previous model (power consumption = 0.51 kWh/24h)
- Extended service life due to demand-orientated power adjustment
- Frequency: 50/60 Hz

If you need further support or have any questions, please contact us.

info@kirsch-medical.de
+49 (0)781 - 9227 0



- **PRO-ACTIVE-Control:** Permanent, proactive monitoring of the performance data and alerts in the case of deviations; world's most accurate temperature control in refrigerated areas thanks to two standard PT-1000 sensors.
- **Touch-Display,** elegant glass design, capacitive.
- **Access control** with protocol.
- **Graphical display** of the temperature curve and min/max temperature.
- **External housing** made from galvanised sheet steel (rustproof), with white, anti-scratch powder coating. Length of the plug cable: approx. 2.8 m.
- **Adjustable feet** positioned at the front to compensate uneven floors.
- **Interior made from** smooth aluminium with colourless protective coating. Gibs (every 15 mm) for flexible interior arrangement.
- **Interior** can be customised (surcharge may apply). See optional equipment.
- **Extra-thick insulation,** made from high-quality, compression-moulded and environmentally friendly material. Energy saving.
- **Self-Closing Door** with easy-to-replace plastic magnetic seal frame, lockable.
- **Door hinge** on the right-hand side (by default, see illustration), or the left-hand side, can be retrofitted.
- **Forced-air cooling,** switches off automatically when you open the door, ensures a uniform temperature and minimizes temperature deviations.
- **Automatic defrosting** with time limit and temperature monitoring.
- **Condensate evaporation** in the refrigerating machine interior.
- **Electronic temperature control,** tamper-proof by RFID/password with digital display and temperature memory.
- **Power failure alarm** (visual and audible alarm), the monitoring unit remains in operation for approx. 30 hours on battery power.
- **Warning functions** with visual and audible alarm signal in the case of temperature deviations or other malfunctions. Door open alarm after 60 seconds.
- **Alarms** can be forwarded via email or SMS using the Kirsch EVOLUTION CLOUD Module (optional).
- **Digital data documentation** readable via PC-KIT-NET or USB interface and software KIRSCH Datanet.
- **Antifreeze** against sub-zero temperatures.
- **Statically ventilated refrigerating machine,** hermetically sealed, energy saving, low noise, easy to service.

Specification

Capacity	330 litres
Temperature setting	approx. +2 °C to +15 °C
Voltage	220 – 240 V, 50 and 60 Hz
Power consumption	39.9 watts
Normal consumption	0,51 kWh/24 h
Admissible ambient temperature	from +10 °C to +38 °C
Heat emission (max.)	202 watts
Exterior dimensions (including door handle and distance from wall)	w x d x h = 67 x 66 x 189 cm
Usable dimensions	w x d x h = 50.4 x 32 x 116 cm
Exterior dimensions with door open at 90°	w x d = 67 x 124 cm
Drawer inner dimensions	w x d x h = 50.4 x 32 x 5.6 cm
Max. load drawer	16 kg
Weight (net/gross)	100 kg/114 kg
Temperature deviation	+/-0.87 °C
Noise emission	39 dB(A)

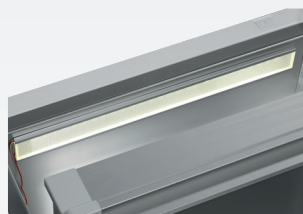
Optional equipment

KIRSCH refrigerators and freezers offer numerous equipment options that can be retrofitted.



Glass door with lock

Transparency: avoid opening the door unnecessarily to inspect the contents. Lockable.



interior lighting, side wall

Optional, optimal and energy-efficient lighting for the interior using an LED lightstrip.



Additional length and cross dividers

for the optimum organisation of your refrigerated goods.



Drawers on runners

Up to twelve drawers are possible in total.



Lockable drawer (top)

Protects special refrigerated goods from unauthorised access.



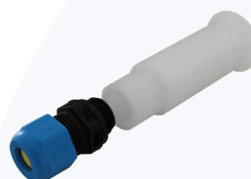
Additional Shelves

Wire shelves, robust with load capacity up to 40 and 50 kg.



Vario Support

Storage shelf on roller runners.



Access Port

Simple insertion of an external temperature sensor with integrated cable feed-through.



Door coupling

Connects the furniture door to the device.



Castors

Can be equipped with steering and fixed castors.



Condensation tray

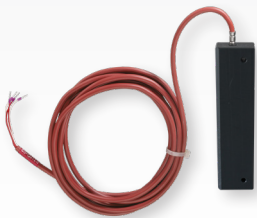
for manual disposal of condensation water.



Decorative frame

Made of stainless steel, allows to cover door with a decorative panel (thickness max. 2 mm).

Equipment for temperature documentation



External PT100/PT1000 with cold block

Additional temperature sensor for connection to existing/external monitoring system.



KIRSCH EVOLUTION CLOUD-Module

Maximum storage safety through optimal connectivity and real-time monitoring.*

* For more information about our cloud, please contact us.

Philipp Kirsch GmbH
Im Lossenfeld 14
77731 Willstätt

Telefon: +49 (0) 781 9227-0
Telefax: +49 (0) 781 9227-200
info@kirsch-medical.de

www.kirsch-medical.com



You can find our complete product overview on our website:
www.kirsch-medical.com